



new

## FINISHES

### ● COLORS



## DIMENSIONS

### ◆ PROFILE LENGTHS mm.

843 | 1124 | 1405 | 1686 | 1967 | 2248

## LIGHTING OPTIONS

### ■ DIFFUSERS

OPAL

### POWER

STANDARD | HIGH

### CRI

90

### COLOR TEMPERATURE

2700K | 3000K | 4000K | TW

### ▼ DIMMABLE OPTIONS

DALI | 1.10 | PUSH

### ▲ LIGHT DISTRIBUTION

DOWN | UP-DOWN

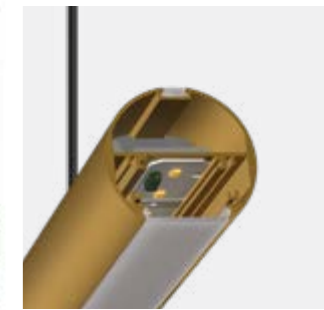
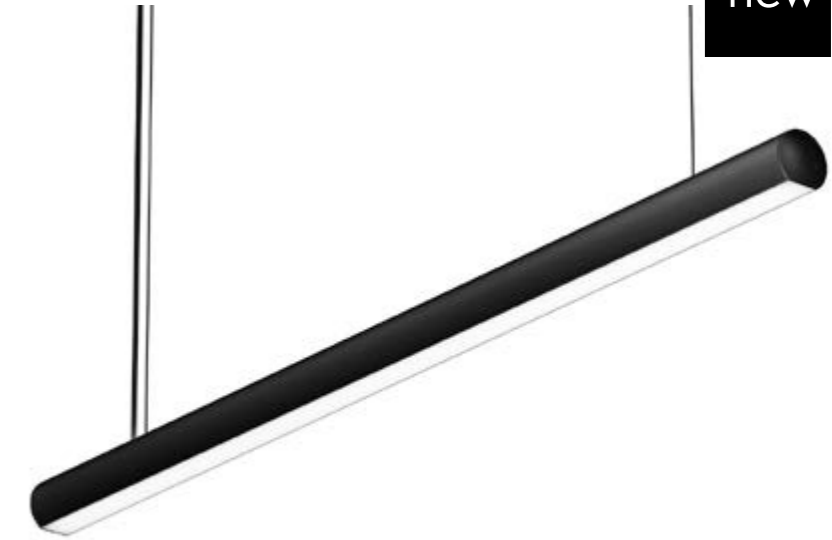
## LUMINAIRE INCLUDES

### .PN

2 x Suspension cables 3m (each 2m)  
 NON-DIM DOWN: 1 x Feed Hose 3 x 0,75mm<sup>2</sup>  
 DIM DOWN or NON-DIM DOWN-UP: 1 x Feed Hose 5 x 0,75mm<sup>2</sup>  
 DIM DOWN-UP (only): Cabling 2 circuits, 2 x Feed Hose 5 x 0,75mm<sup>2</sup>  
 Diffuser

### .SR

Surface mounting kit



### ON DEMAND

Emergency Lighting\*  
 Motion Detection  
 Custom dimensions  
 Special Color Temperature  
 RGB  
 Thematic LED  
 Wireless Control Options (Casambi)  
 CRI 80

\* Delivered separately  
 (not installed in luminaire).

## INSTALLATIONS



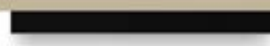
# LINGGO

REF 210002.PN | 210002.SR



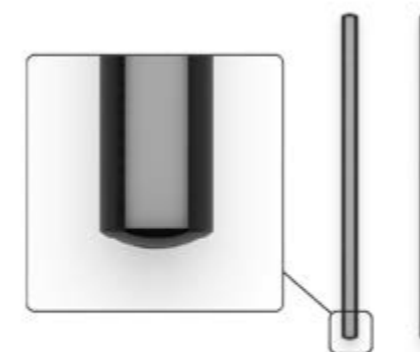
.PN  
PENDANT

·210002 LINGGO | PN  
Pag. 214



.SR  
SURFACE

·210002 LINGGO | SR  
Pag. 214



PENDANT | SURFACE  
 .SR  
 .PN

REF.	PROFILE LENGTH		FINISH	DIFFUSER	POWER	CRI	DOWNLIGHT *4				WATT		UPLIGHT .UP *3   LUMEN			WATT		DIMM OP.
	MM	MM					.27	.30	.40	.TW *2	K	TW	.27	.30	.40	K	K	
210002	.03	843	●	.OP	.ST	.9	2295	2385	2475	5700-5910	18	38	265	274	349	4	.DA*1 .PU .D1	
	.04	1124					3060	3180	3300	7600-7880	24	51	397	411	522	6		
	.05	1405					3825	3975	4125	9500-9850	30	64	259	548	696	8		
	.06	1686					4590	4770	4950	11400-11820	35	76	661	685	870	10		
	.07	1967					5355	5565	5775	13300-13790	41	89	793	822	1044	12		
	.08	2248					6120	6360	6600	15200-15760	47	102	925	958	1218	14		

REF.	PROFILE LENGTH		FINISH	DIFFUSER	POWER	CRI	DOWNLIGHT *4   LUMEN			WATT		UPLIGHT ▲.UP *3   LUMEN			WATT		DIMM OP.
	MM	MM					.27	.30	.40	K	TW	.27	.30	.40	K	K	
210002	.03	843	●	.OP	.HI	.9	4590	4767	4956	35		568	587	747	8	.DA*1 .PU .D1	
	.04	1124					6120	6356	6608	47		851	880	1119	13		
	.05	1405					7650	7945	8260	59		1134	1173	1492	17		
	.06	1686					9180	9534	9912	71		1417	1466	1864	21		
	.07	1967					10710	11123	11564	83		1701	1760	2237	25		
	.08	2248					12240	12712	13216	94		1984	2053	2610	30		

Reference order 210002.XX | .SR | .XX.XX.XX.9.XX.XX.XX

Total length = Profile length + 20mm + 2x12mm (Cover kit)

Select finishes



## COMPONENTS

COVER KIT	REF.	FINISH
	TF09 2x12mm.	●

Reference order TF09 | .SR | .PN | .XX

REDUGER	REF.	POWER
	ACC.RG	.ST .HI

Reference order ACC.RG.XX

## JOINTS

LINEAR JOINT	ANGLE JOINT	T-JOINT	CROSS JOINT	WALL-CEILING JOINT	FINISH
		X	X	X	●
UR09	UL09	X	X	X	

Reference order UL09 | .SR | .PN | .XX

## OPTIONS (.PN)

SUSPENSION KIT	REF.	DIMENSION	FINISH
	SC05	5M.	.SA
	SC07	7M.	
	SC10	10M.	

Reference order SCXX.SA

SUSPENSION ROD	REF.	DIMENSIONS	mm	FINISH
	SC21	.60	600	●
		.80	800	
		.100	1000	

Reference order SC21.XX.XX

Not-included, please select:

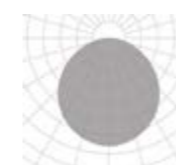
CONNECTION BOX	FINISH
	●
CB09.12	

Reference order CB09.12.XX

# LINGGO

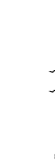
REF 210002.PN | 210002.SR

## PHOTOMETRY



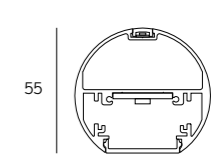
OPAL

## INCLUDED (.PN)



SC03.SA  
WIRE 3M.

## PROFILE



61

\*1 DALI protocol requires remote driver. Protocolo DALI requiere driver en remoto.

\*2 Tunable White (TW) values correspond to 2700K and 6500K - TW is only available for DALI DT8 dimmable (DA), CRI 80 (8) 700mA. Los valores del blanco dinámico (TW) corresponden a 2700K y 6500K. -TW solo está disponible con protocolo DALI DT8 (DA), CRI 80 (8) 700mA.

\*3 Uplight (UP) is only available for ON-OFF and DALI dimmable (DA) options, both in 24VdC. La luz indirecta está solo disponible para versiones on-off y regulación DALI (DA), ambas en 24VdC.

\*4 Down light (direct light) works at 500mA. La luz directa trabaja a 500mA.