



FINISHES

● COLORS



DIMENSIONS

◆ LENGTHS mm.

794 | 1189 | 1584 | 1979

LIGHTING OPTIONS

■ BEAM ANGLE

20° | 40° | 60°

POWER

STANDARD

CRI

90

COLOR TEMPERATURE

2700K | 3000K | 4000K

▼ DIMMABLE OPTIONS

DALI | 1.10 | PUSH

▲ LIGHT DISTRIBUTION

DOWN

LUMINAIRE INCLUDES

.PN

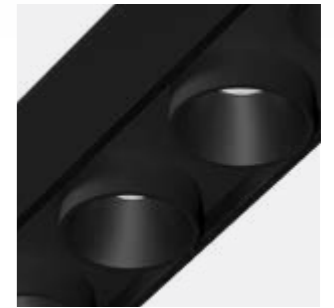
2 x Suspension cables 3m
NON-DIM DOWN or DIM DOWN: 1 x Feed Hose 3 x 0,75mm²

.SR

Surface mounting kit



new



ON DEMAND

Emergency Lighting *
Custom dimensions
Motion Detection
Wireless Control Options (Casambi)



* Delivered separately
(not installed in luminaire).

INSTALLATIONS



OKKO MODULAR LINE

REF 210012.PN | 210012.SR



.PN
PENDANT

·210012 OKKO MODULAR LINE|
PN - Pag. 150



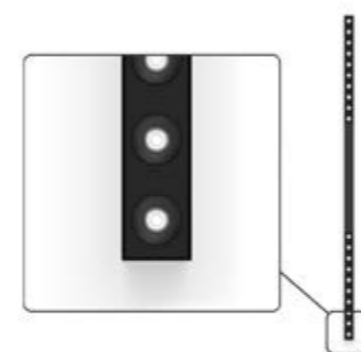
.SR
SURFACE

·210012 OKKO MODULAR LINE|
SR - Pag. 150



.RF
RECESSED FRAME

·410012 OKKO MODULAR|
RF - Pag. 468



.SR

.PN

PENDANT | SURFACE

OKKO MODULAR LINE	REF.	DIMENSION	FINISH	POSITIONS
	210012	.02	●	2
		.03		3
		.04		4
		.05		5



Reference order | 210012.XX.SR.PN.XX

OKKO LINE LED MODULES	REF.	DIMENSION	FINISH	OPTIC OPTIONS	POWER	CRI	LUMEN	WATT	mA	SKETCH
	110004	.10	●	.20 .40 .60	.ST	.9	1114 1245 1320	12	500	

Reference order | 110004.10.XX.XX.ST9.XX

OPAQUE	REF.	DIMENSION	FINISH	SKETCH
	ACC210012	.10	●	

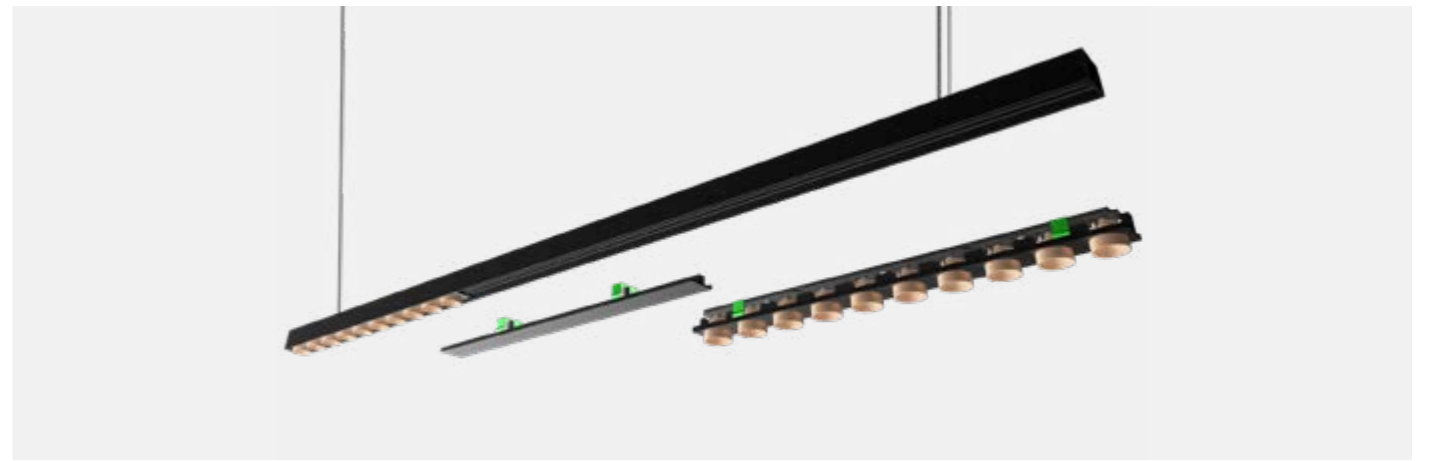
Reference order | ACC210012.10.XX

OKKO LINE DRIVER	DIMENSION	DIMM
DR210012	.01	1 - 5 modules
	.02	6 - 9 modules
	.03	10 - 13 modules
	.04	14 - 17 modules
	.05	18 - 20 modules

Reference order | DR210012.XX.XX

COVERT KIT	REF.	FINISH
	TF24	●

Reference order | TF24.SR.PN.XX



Not-included, please select:

CONNECTION BOX AND DRIVER BOX FOR REMOTE DRIVER	DRIVER BOX NON-DIMM	DRIVER BOX DIMMABLE	FINISH
			●
CB09.12	CB04.OP *	CB09.32	CB09.40

*No finish color, use this reference as it is (CB04.OP).
Sin acabado de color, la referencia es tal cual (CB04.OP)

Reference order | CBXXXX.XX

SUSPENSION KIT	REF.	DIMENSION	FINISH
	SC05	5M.	.SA
	SC07	7M.	
	SC10	10M.	

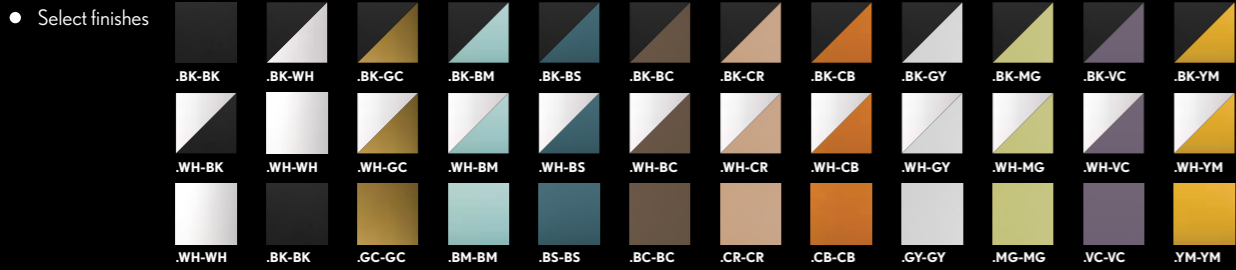
Reference order | SCXX.SA

REFERENCE ORDER EXAMPLE
EJEMPLO DE REFERENCIA



Create an OKKO like the one in the example. Crea un OKKO como el del ejemplo:

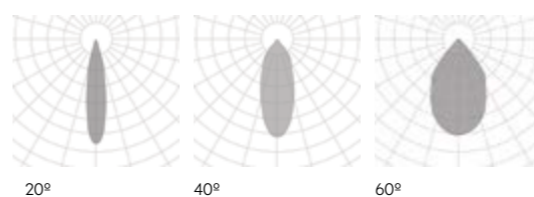
- Select PROFILE. *Selecciona PERFIL.* 210012.95.PN.XX
- Select LED MODULE and quantity. *Selecciona el modulo LED y la cantidad.* 110004.95.XX.XX.ST9.XX (4Qty./Uds.)
- Add LED MODULES' position. *Añade la posición de los módulos LED.* 1,2,4,5
- Add number of OPAQUE diffusers. *Añade el número de difusores OPAQUE.* ACC210012.95.XX (1Qty./Uds.)
- Verify DRIVER depending on the number of LED modules. *Verifica el DRIVER dependiendo del número de módulos LED.* DR210012.02.XX



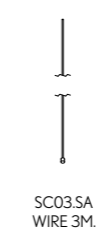
OKKO
MODULAR LINE
REF 210012.PN | 210012.SR



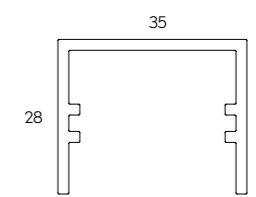
PHOTOMETRY



INCLUDED (.PN)



PROFILE



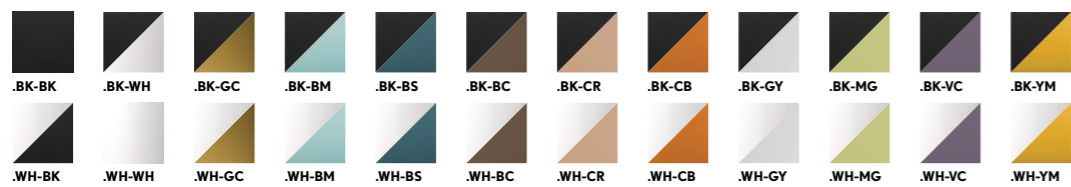
PENDANT | SURFACE



OKKO MODULAR	REF.	DIMENSIONS	FINISHES	LAMP	OPTIC OPTIONS	POWER	CRI	K	LUMEN	WATT	mA	DIMM*	SKETCH
	410012	.01	●	.LED	.20 .40 .60	.ST	.9	.27 .30 .40	111 125 132	2	100	.DA .PU .D1	
	410012	.02	●	.LED	.20 .40 .60	.ST	.9	.27 .30 .40	222 250 264	3	200	.DA .PU .D1	
	410012	.03	●	.LED	.20 .40 .60	.ST	.9	.27 .30 .40	333 375 396	5	300	.DA .PU .D1	
	410012	.05	●	.LED	.20 .40 .60	.ST	.9	.27 .30 .40	555 625 660	7	500	.DA .PU .D1	
	410012	.10	●	.LED	.20 .40 .60	.ST	.9	.27 .30 .40	1114 1245 1320	12	500	.DA .PU .D1	

Reference order | 410012.XX.RF.XX.XX.ST9.XX.XX

● Select finishes



FINISHES

EXTERNAL COLOR



INTERNAL COLOR



DIMENSIONS

● View in family specifications

.01 | .03 | .05 | .10

LIGHTING OPTIONS

■ BEAM ANGLE

20° | 40° | 60°

POWER

STANDARD

CRI

90

COLOR TEMPERATURE

2700K | 3000K | 4000K

▼ DIMMABLE OPTIONS

DALI | 1.10 | PUSH

▲ LIGHT DISTRIBUTION

DOWN

ON DEMAND

Dim to Warm
Tunable White
Wireless Control Options



INSTALLATIONS

.PN
PENDANT

·210012 OKKO MODULAR LINE|
PN - Pag. 150

.SR
SURFACE

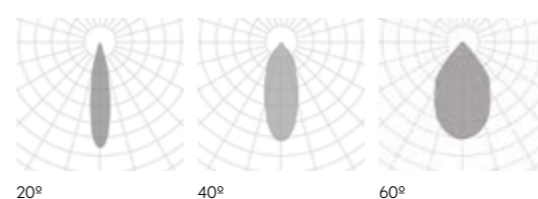
·210012 OKKO MODULAR LINE|
SR - Pag. 150

.RF
RECESSED FRAME

·410012 OKKO MODULAR | RF-Pag.
468



PHOTOMETRY



OKKO MODULAR

REF 410012.RF

RECESSED FRAME